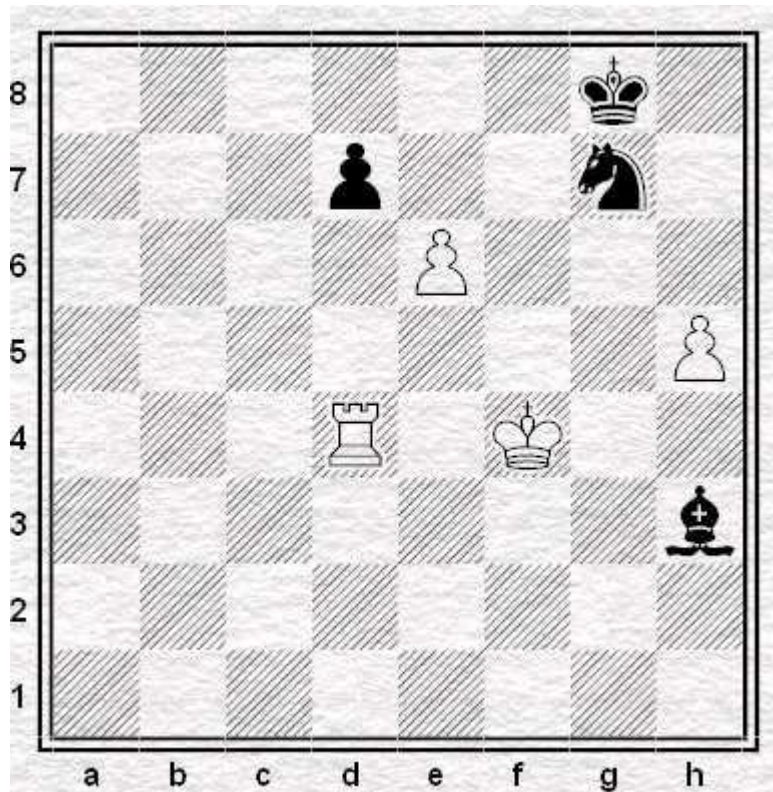


Author: Grzegorz Mazur (2013)

White to play and win:



[4+4]

Solution:

**1. ed7 N:h5+/i 2. Kg5!/ii B:d7 3. R:d7 Ng7 4. Kf6! Nh5+/iii 5. Kg6 Nf4+
6. Kg5 Ne6+ 7. Kf6 Nf4 8. Rd8+ Kh7 9. Rd4 Nh5+ 10. Kg5 Ng7 11. Re4! Kg8
12. Kh6!! Kf8 13. Rf4+ Kg8 14. Rg4 Kh8 15. Kg6 Kg8 16. Kf6 Kh8
17. Ra4 Kg8 18. Ra8+ Kh7 19. Ra7 Kh8 20. Kg6 1-0**

/i

also possible: **1... Ne6+ 2. Kg3 Bf5 3. Rd6 Nd8** (3. d8Q+? N:d8 4. R:d8+ Kh7 theoretical draw!) **4. Kf4 Bc2** (4... Bb1? 5. Rb6 and 6. Rb8) **5. h6 Kf8 6. Rd2 Bb3 7. Kg5 Be6 8. Rf2+ Kg8 9. Kg6 Bf7+ 10. R:f7! N:f7 11. h7+ Kf8 12. Kf6 +/-**

/ii

thematic try: **2. Ke5? B:d7 3. R:d7 Kf8!!**
(but not: 3... Ng7? 4. Kf6!) **4. Kf5 Ng7+ 5. Kg6 Ne8**
6. Rf7+ Kg8 7. Re7 Kf8 8. Rd7 Kg8 9. Kf5 Kf8 10. Ke6 Ng7+ 11. Kf6 Ne8+
12. Kg6 Kg8 13. Rd8 Kf8 positional draw

/iii

symmetric game after: **4... Ne8+ 5. Ke7 Ng7 6. Rd5! Kh7 7. Kf8!! Kh6**
8. Rd6+ Kh7 9. Rd7 Kh8 10. Kf7 Kh7 11. Kf6 Kh8 12. Rd1 Kh7 13. Rh1+ Kg8
14. Rg1 Kh8 15. Kf7 +/-