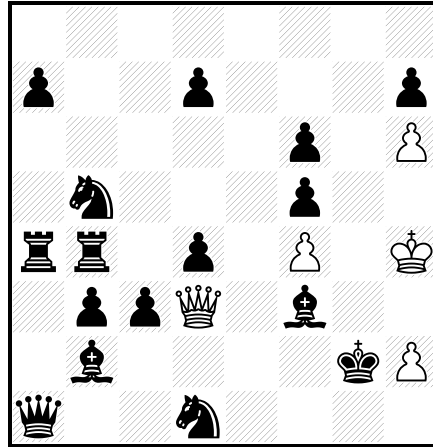


My Chess Mosaic

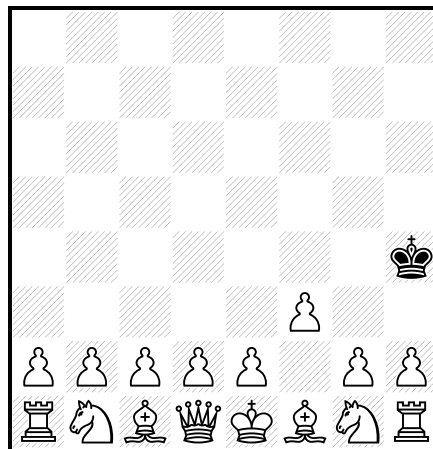
Melts M., 1965



Draw

1.Qxf3+!! Kxf3 [1...Kxh2 2.Qg3+ Kh1 3.Kh3 Nf2+ 4.Qxf2, and White wins; 1...Kg1 2.Kg3 Ne3 3.Qf2+ Kh1 4.Qf3+ Kg1 5.Qf2+]
2.Kh5! White wants to get Stalemate after 3.h4. Black has 2 moves (!! but can not do anything, for example: **2...Kxf4** [2...Kg2 3.h4 with Stalemate] **3.h4** with Stalemate.

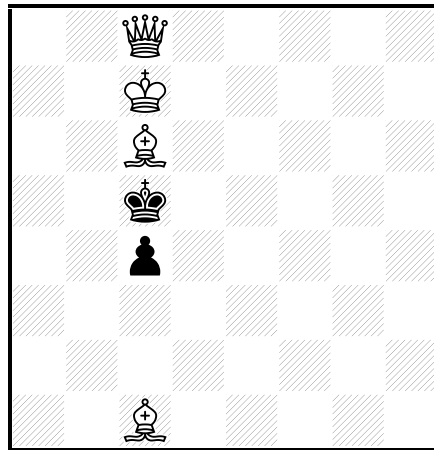
Melts M., 1965



#3

1.d4 Kh5 2.Qd3 Kh4 3.Qh7#

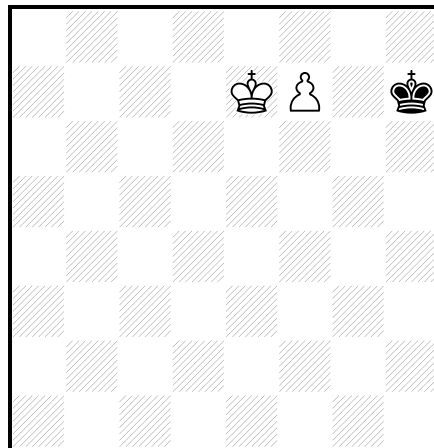
Melts M., 1965



#2

1.Qh3 c3 [1...Kd4 2.Qe3#; 1...Kb4 2.Qa3#] 2.Qxc3#

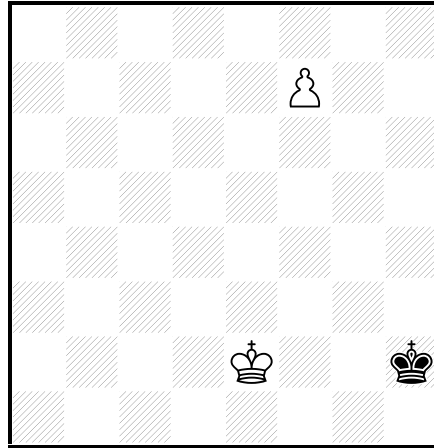
Melts M., 1972



#4

1.Kf6! Kh6 [1...Kh8 2.f8Q+ Kh7 3.Qg7#] 2.f8Q+ Kh5 [2...Kh7 3.Qg7#] 3.Qb4 Kh6 4.Qh4#

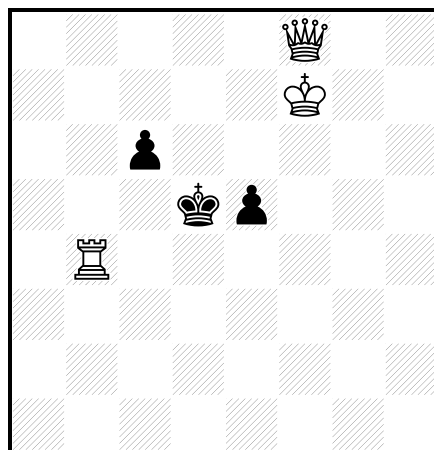
Melts M., 1972



#4

1.Kf3 Kh3 [1...Kh1 2.f8Q Kg1 (2...Kh2 3.Qg7 Kh3 4.Qh6# /g3#)
3.Qh8 Kf1 4.Qa1# /h1#; 1...Kg1 2.f8Q Kf1 (2...Kh2 3.Qg7)
3.Qc5 Ke1 4.Qc1#] **2.f8Q Kh2** [2...Kh4 3.Qh6#] **3.Qg8 Kh1**
4.Qg2#

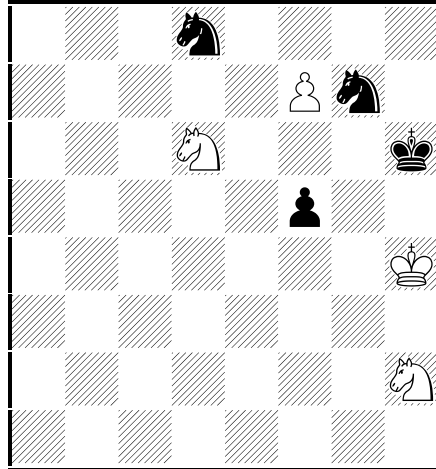
Melts M., 1972



#2

1.Ke7 c5 [1...e4 2.Qf5#; 1...Kc5 2.Ke6#] **2.Qa8#**

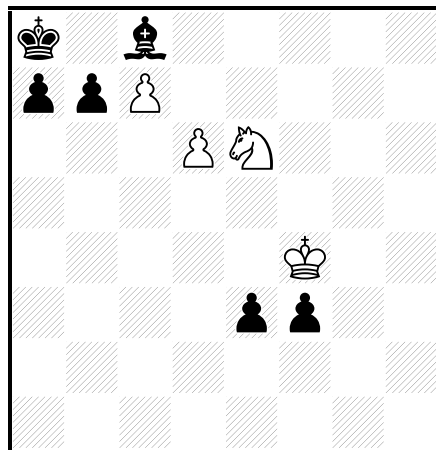
Melts M., 1973



#2

1. f8N Nde6 [1...Nh5 2.Nxf5#; 1...f4 2.Ng4#] 2. Nf7#

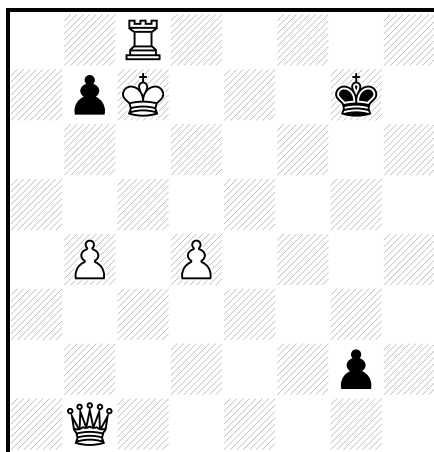
Melts M., 1973



Draw

1. d7 Bxd7 2. c8Q+ Bxc8 3. Nc7+ Kb8 4. Na6+ bxa6 5. Kxf3 a5
 6. Kxe3 a4 7. Kd2 a3 8. Kc2 (8. Kc1 ?? 8...Bf5; 8. Kc3 ?? 8...Be6
 9. Kc2 Ba2 10. Kc3 a5) 8...a2 (or 8...Be6 9. Kb1) 9. Kb2 with a
 draw.

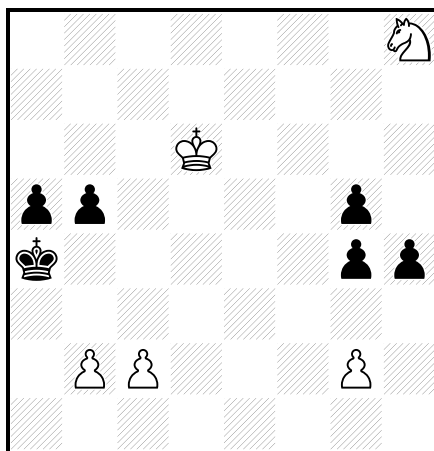
Melts M., 1993



#4

1.**kd7!** (1.Kd6? Kf6!) 1...b5 [1...b6 2.Rc2!! 2...Kf6 (2...Kg8) 3.Rxg2] 2.**Rc3!!** [2.Rc2 ? 2...Kh8 !; 2.Rc6 ? 2...g1Q !(2...g1R 1)] 2...g1Q [2...Kf6 3.Rg3 g1Q (3...Kf7 4.Qf5#) 4.Qg6#] 3.**Qxg1+** Kf6 4.**Rf3#**

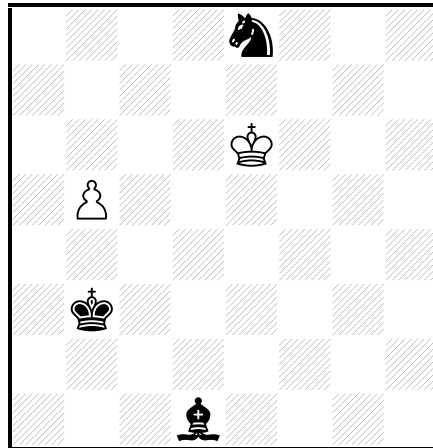
Melts M., 1996



Draw

1.Nf7 h3 2.gxh3 gxh3 3.Nxg5 h2 4.Ne4 h1Q 5.Nc3+ Kb4 6.Nd5+ Kc4 7.Ne3+ Kd4 8.Nf5+ with a draw.

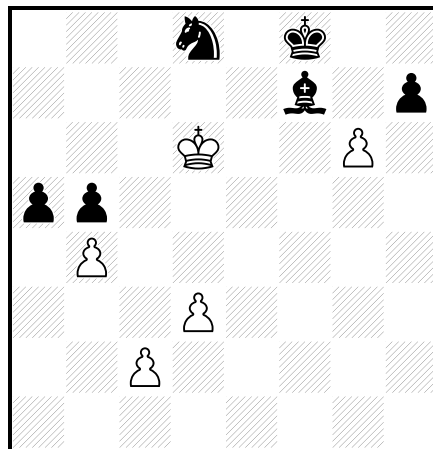
Melts M., 1996



Draw

1.b6 Bf3 2.Ke7 Ng7 3.Kf6 Nh5+ 4.Kg5 Ng3 [4...Kb4 5.b7; 4...Ng7 5.Kf6 Ne8+ 6.Ke7] 5.Kf4 with a draw.

Melts M., 1999

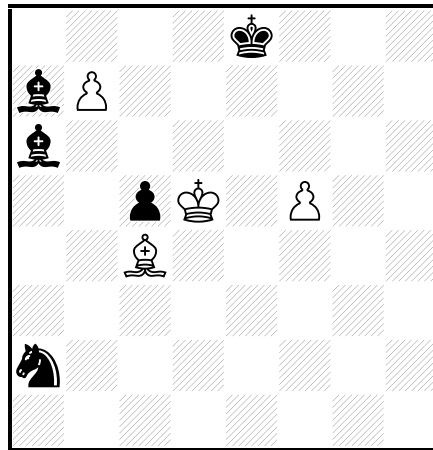


Draw

1.gxh7 (1.bxa5? Bxg6 2.a6 (2.Kd7 Nb7) 2...Be8 3.a7 Bc6 -+; 1.gxf7? a4-+) 1...Kg7 2.bxa5 Nb7+ (2...Bh5 3.a6 Bf3 4.d4=)

3.Kc6 Nxa5+ 4.Kxb5 (4.Kb6? Nc4+) 4...Nb7 5.Kc6 Nd8+ 6.Kd7 Ne6 7.Ke7 Ng5 8.h8Q+ Kxh8 9.Kf6 with a draw.

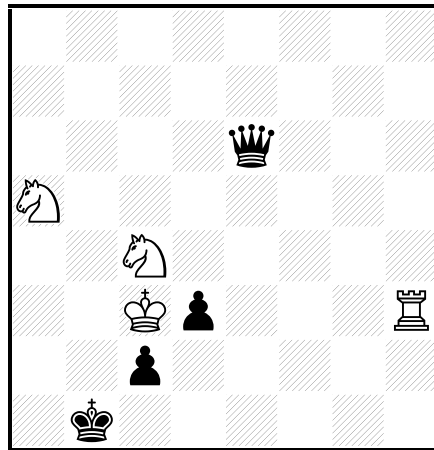
Melts M., 2007



Draw

1.b8Q+ [1.Bxa6? Nb4+ 2.Kc4 Nxa6 3.Kb5 Nb8; 1.Bxa2? 1...Bxb7+] 1...Bxb8 2.Bxa6 Nb4+ 3.Kxc5 Nxa6+ 4.Kb5 Nc7+ 5.Kc6 Kd8 6.Kb7 with a draw.

Melts M., 2008



Draw

1.Rh1+ c1Q+ 2.Rxc1+ Kxc1 3.Nb3+ Kd1 [3...Kb1 4.Nbd2+] 4.Nb2+ Ke1 [4...Ke2 5.Nd4+] 5.Nxd3+ Kf1 6.Nd2+ Kg1 [6...Kg2 7.Nf4+] 7.Nf3+ Kh1 8.Nde1 Qd5 [8...Qe2 9.Kd4] 9.Kc2 with a draw.